



Building community health and resilience beyond COVID-19



Gary Cohen

Health Care Without Harm
founder



Denise Fairchild

Emerald Cities Collaborative
president and CEO



Helga Garcia-Garza

Agri-Cultura Network director



Jon Utech

Cleveland Clinic Office for a Healthy
Environment senior director

Emerald Cities Collaborative president and CEO

Denise Fairchild

Denise Fairchild is the inaugural president of Emerald Cities Collaborative (ECC), a nonprofit organization based in D.C. with affiliates in urban centers. She works to make U.S. cities environmentally sustainable, build resilient local economies, and ensure equity inclusion in both the and outcomes of a green and healthy economy. Fairchild has a 40-year successful track record with innovative programs in sustainable community development.





BUILDING COMMUNITY HEALTH AND RESILIENCE BEYOND COVID-19

Clean Med 2020 Webinar

Denise G. Fairchild, Ph.D.



EMERALD CITIES COLLABORATIVE MISSION





TRADITIONAL RESILIENCE PLANNING





POST-COVID REALITIES

Environmental
justice

Social
Justice

Economic
justice



STRUCTURAL IMPEDIMENTS

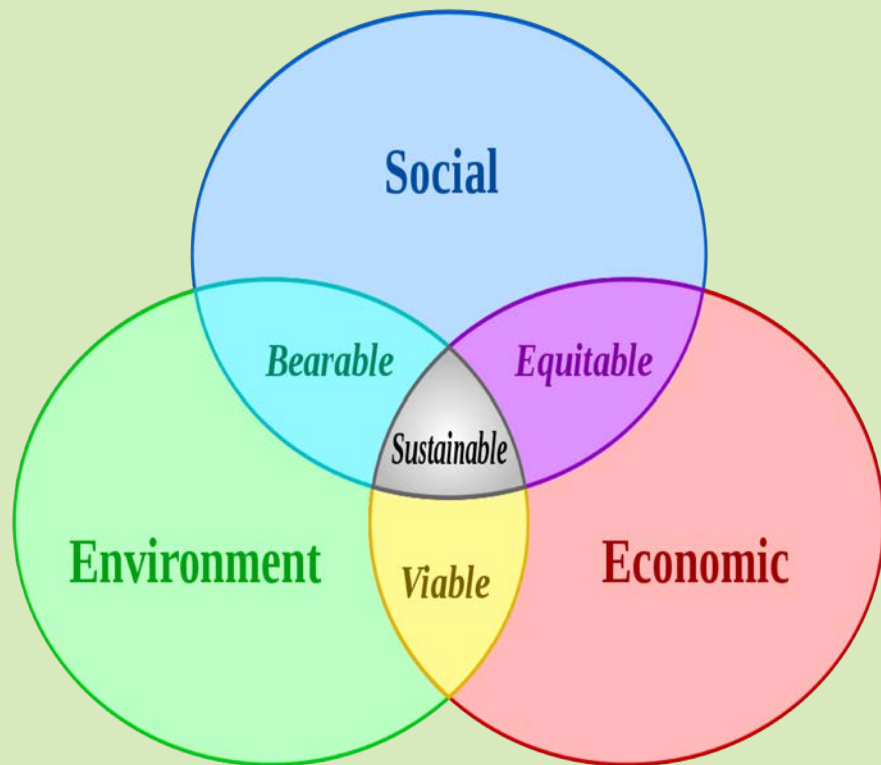
THE EXTRACTIVE ECONOMY



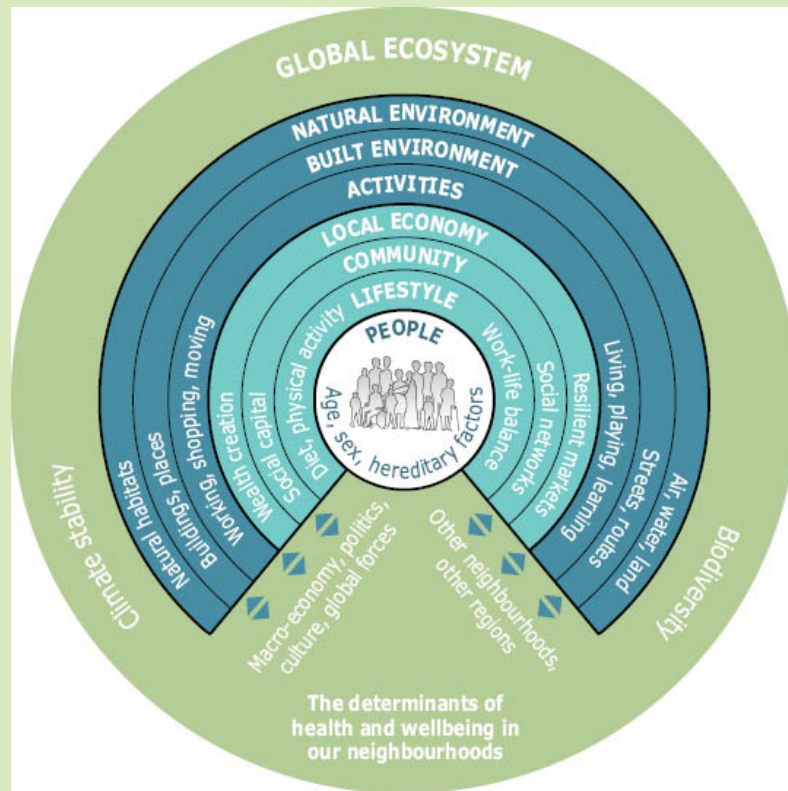
[illegible][illegible][illegible]



ANATOMY OF A HEALTHY/RESILIENT COMMUNITY



5/28/20





HEALTHY SOCIAL INFRASTRUCTURE

Creating a
community
where people
know and
care for each
other

Community
Leadership

Political
Empowermen
t

Intermediary
Institutions



Climate
Resilience
&
Adaptatio
n

Hiring
Networks

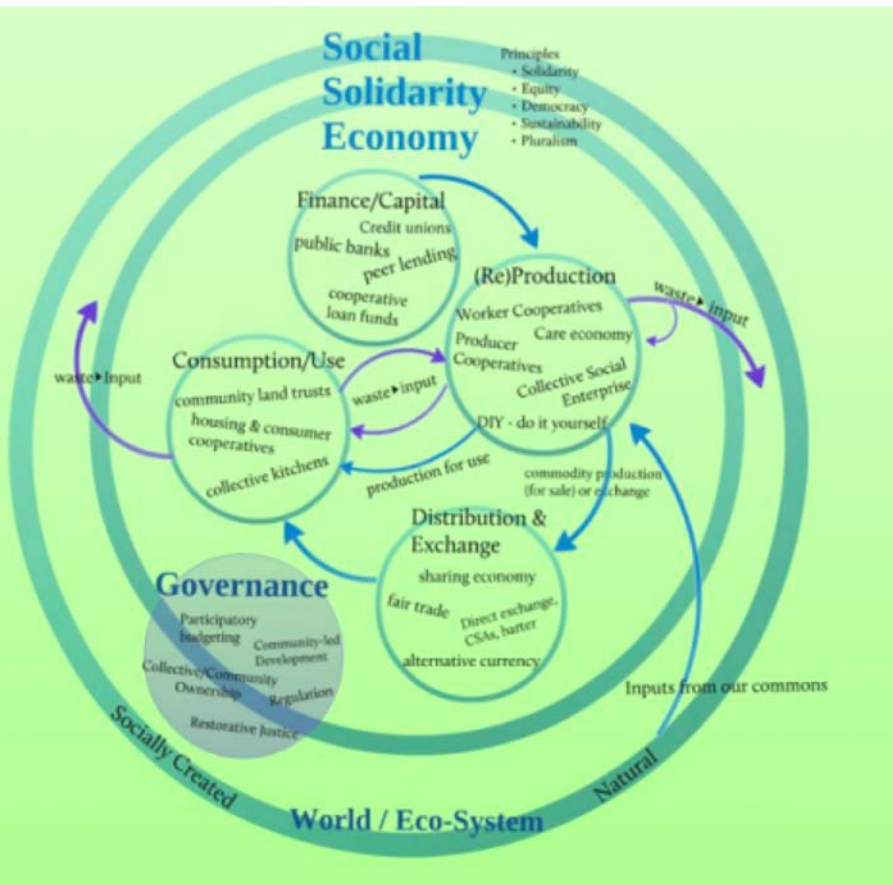
Mental &
Physical
Health

Efficacy &
Self Worth

Crime
Rates



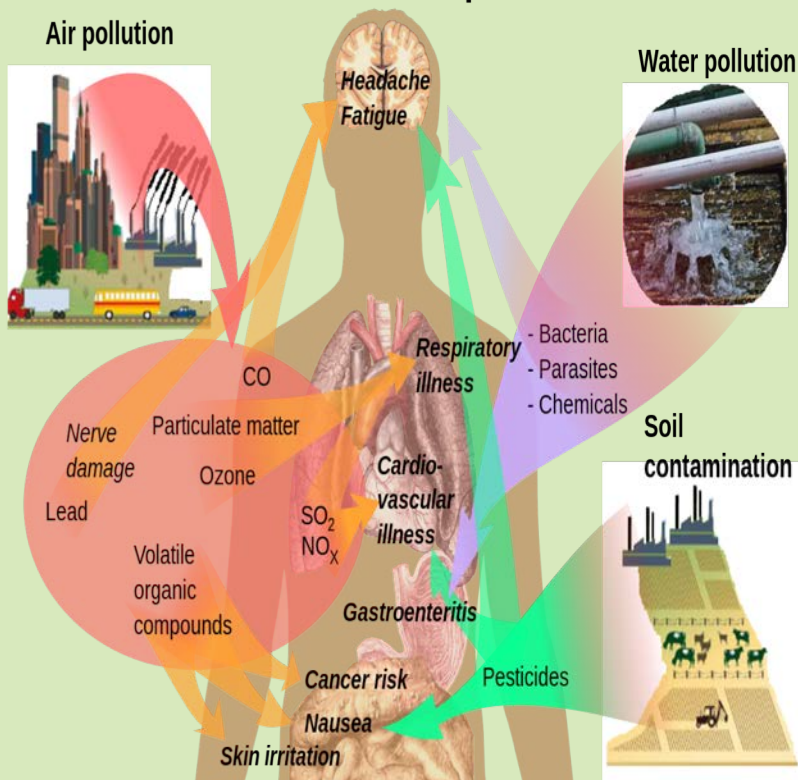
HEALTHY ECONOMY





HEALTHY NATURAL & BUILT ENVIRONMENTS

Health effects of pollution



Mobilizing Anchor Potential Regionally; Aggregating Up





ANCHORS IN RESILIENT COMMUNITIES (ARC)

Promoting Health, Wealth and Climate Resilience

ARC EAST BAY SAN FRANCISCO A CASE STUDY

Collaborative Projects of Emerald Cities Collaborative with
Health Care Without Harm and MIT CoLab

REPORT FUNDED BY
THE KRESGE FOUNDATION
2017

10



ANCHORS IN RESILIENT COMMUNITIES (ARC)

Promoting Health, Wealth and Climate Resilience

ARC BRONX, NEW YORK A CASE STUDY

Collaborative Projects of Emerald Cities Collaborative with
Health Care Without Harm and MIT CoLab

REPORT FUNDED BY
THE KRESGE FOUNDATION
2017



ANCHORS IN RESILIENT COMMUNITIES (ARC)

Promoting Health, Wealth and Climate Resilience

ARC MIAMI A CASE STUDY

Collaborative Projects of Emerald Cities Collaborative with
Health Care Without Harm and MIT CoLab

REPORT FUNDED BY
THE KRESGE FOUNDATION
2017



COMMUNITY RESILIENCE A COMMUNITY ENGAGEMENT PRIMER FOR HEALTH PROFESSIONALS



A GUIDE TO
COMMUNITY HEALTH, WEALTH AND CLIMATE RESILIENCE



ANCHORS IN RESILIENT COMMUNITIES (ARC)

Promoting Health, Wealth and Climate Resilience

LESSONS LEARNED

Version 1.0

Collaborative Projects of Emerald Cities Collaborative with
Health Care Without Harm and MIT CoLab

REPORT FUNDED BY
THE KRESGE FOUNDATION
2017

1



Emerald Cities
COLLABORATIVE
America empowered.



Agri-Cultura Network director

Helga Garcia-Garza

Garcia-Garza co-manages the day-to-day operations of the Agri-Cultura Network. She oversees the development of the networks, programs, and community events, which include La Cosecha and a monthly cooking class. Garcia-Garza has a long history as a community organizer and an environmental and food justice advocate.





Agri-Cultura Network

Founded in 2011

9 cooperative South Valley farms, and 36 allied farms from urban and rural Rio Grande communities

Sells to Albuquerque Public Schools, hospitals, a 300-member CSA, restaurants, and retail



Partnering with health care

La Cosecha CSA

Healthy Here Mobile Farmers Market

Healthy Neighborhoods Albuquerque

Nutrition education

Farm-to-institution

Eco-Wellness Center



Community benefit case study



Honoring local knowledge, growing health, and improving equity

Reference:

<https://foodcommunitybenefit.noharm.org/case-studies/honoring-local-knowledge-growing-health-and-improving-equity>

Local Food Solutions



coming
clean

**Environmental
Justice Health**
Alliance for Chemical
Policy Reform



CAMPAIGN FOR
**Healthier
Solutions**



Project goal

To improve community health, resilience, wealth, and self-sufficiency by placing locally and sustainably grown produce and products into dollar stores in the South Valley of Albuquerque as an example, and building a strategy and relationships to eventually expand the project to other communities

Reference:

<https://noharm-uscanada.org/articles/news/us-canada/new-mexico-farmers-supply-dollar-store-groceries-pilot-national-potential>

New Mexico farmers supply dollar store groceries, a pilot with national potential

News posted by **Healthy Food Team** on **January 27, 2020**

US & Canada

Tags: **HCWH US and Canada, Healthy Food in Health Care, Southwest, New Mexico, local food**



Dollar stores are starting to expand offerings to include fresh produce. (Kzoo Cowboy/Flickr)

Dollar General annual shareholder meeting



Reference:

<https://www.nrdc.org/stories/farms-dollar-stores-one-womans-fight-justice>

Building a wellness ecosystem



Reference:

<https://www.youtube.com/watch?v=cvLYeS9GmIo&feature=youtu.be>

Cleveland Clinic Office for a Healthy Environment senior director

Jon E. Utech

Since 2013, Jon Utech has led Cleveland Clinic's sustainability program, covering energy demand reduction, recycling, LEED, climate resilience, sustainable food, green supply chain, water reduction, engagement, and reporting. He also leads the organization's climate action, which includes climate resilience planning, energy efficiency, and renewable energy.



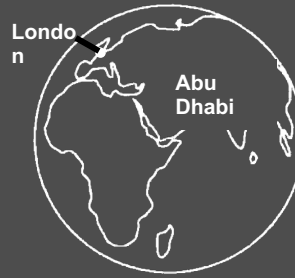
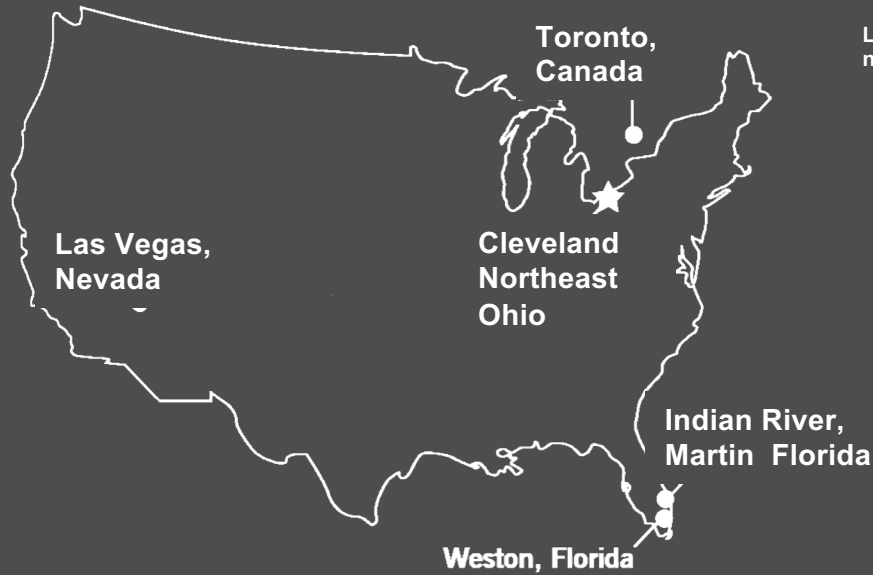
Building Community Resilience

Jon Utech, MBA, MPOD

Senior Director, Office for a Healthy Environment
Cleveland Clinic



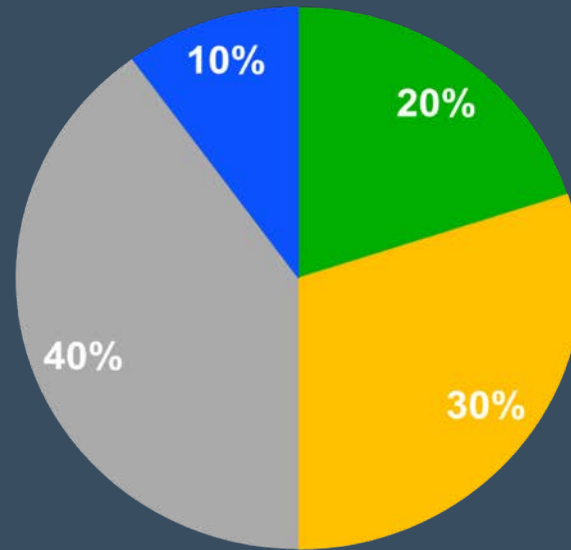
Cleveland Clinic Today



- **\$10 Billion+ Revenue**
- **66,000 Caregivers**
- **9 Million Total Visits**
- **Leader in US News & World Rankings:**
 - #2 hospital overall
 - #1 in heart for 25 consecutive years
 - 12 other specialties rank in top 10
- Patients travel from 170 countries
- 75+ spin off companies since 2000

Sustainability in HealthCare = Leveraging Determinants of Health

Population Health



■ Health Care

■ Health Behaviors

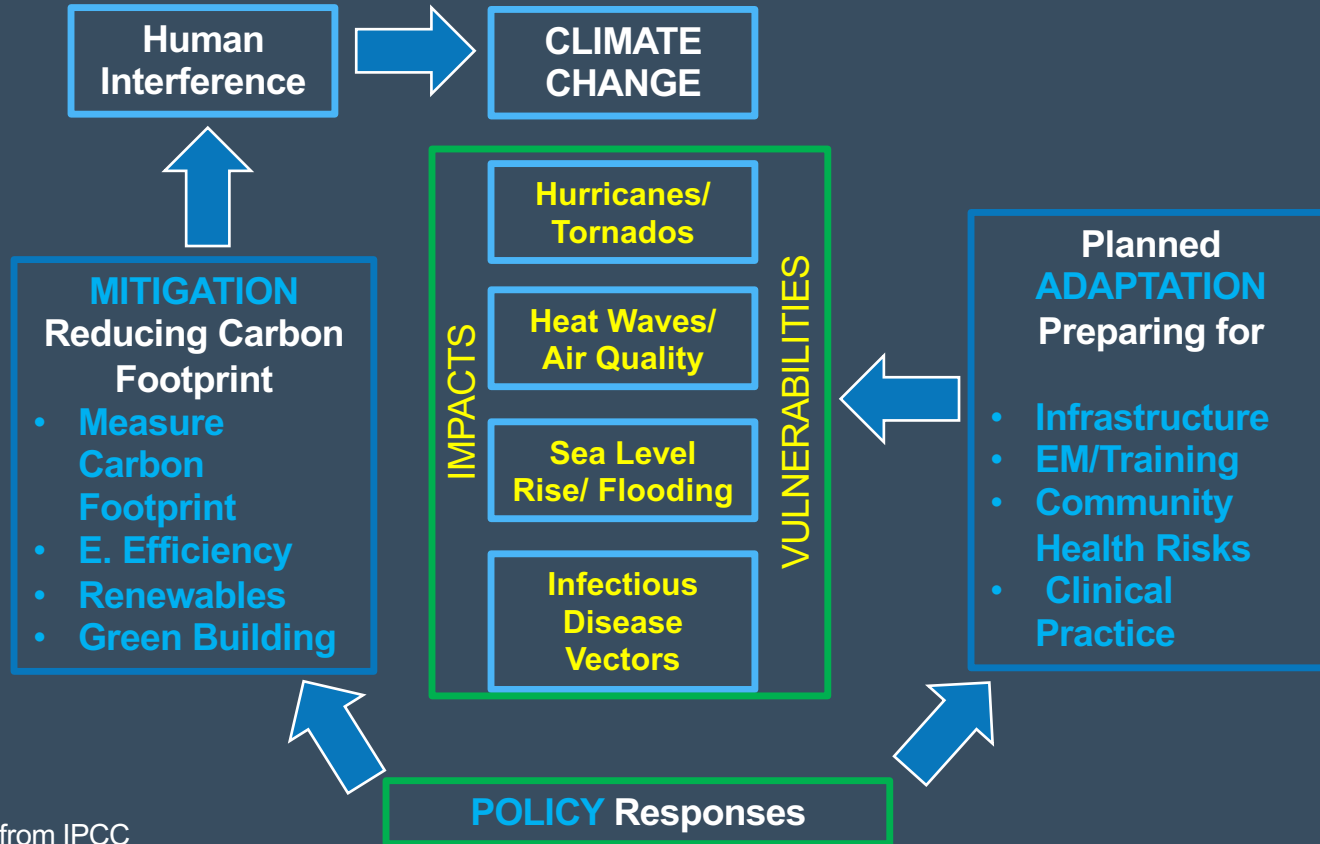
■ Socio-Economic Factors

■ Physical Environment

Source: "Community Health Centers Leveraging the Social Determinants of Health"



Cleveland Clinic Climate Change Strategies



Cleveland Clinic: Carbon Neutral by 2027



**TACKLING CLIMATE
CHANGE COULD
BE THE GREATEST
GLOBAL HEALTH
OPPORTUNITY OF
THE 21ST CENTURY**

The Lancet, June 2015

HEALTH FACILITIES[®]
MANAGEMENT



DESIGN CENTER

QUICKLINKS ▾



[Architecture](#) [Construction](#) [Engineering](#) [ES](#) [Interior Design](#) [Operations](#) [Products](#) [Regulatory](#) [Sustainability](#) [Technology](#) [About Us](#)

SUSTAINABILITY

Cleveland Clinic makes carbon-neutrality its newest sustainability goal

Health system plans to reach goal through renewable energy purchases, continued energy efficiency

November 30, 2017 | Jeff Ferenc

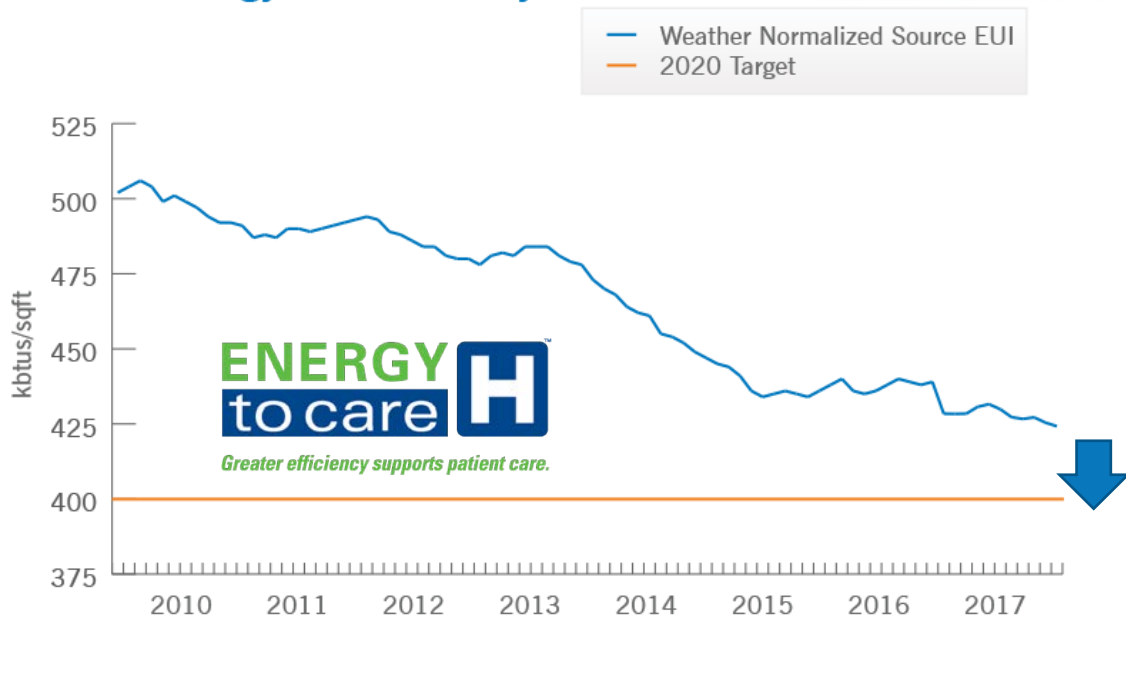


Cleveland Clinic is expanding successful energy-saving strategies it has implemented and purchasing renewable energy to reach its goal of being carbon-neutral in 10 years.

Energy Efficiency: Mitigation – 20% Goal



Enterprise Weather Normalized Source Energy Use Intensity



- LED Retrofits
- OR Setbacks
- Chiller Optimizations
- Filter Optimizations
- Retro-Commissioning
- Building Monitoring
- Temperature Control

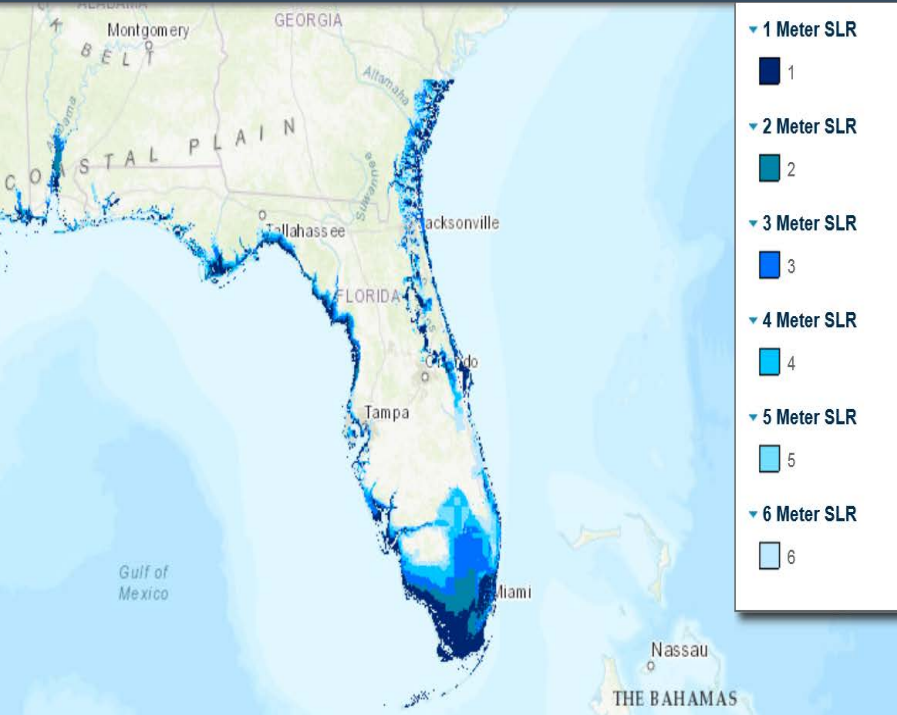
Implementing the largest LED retrofit in healthcare



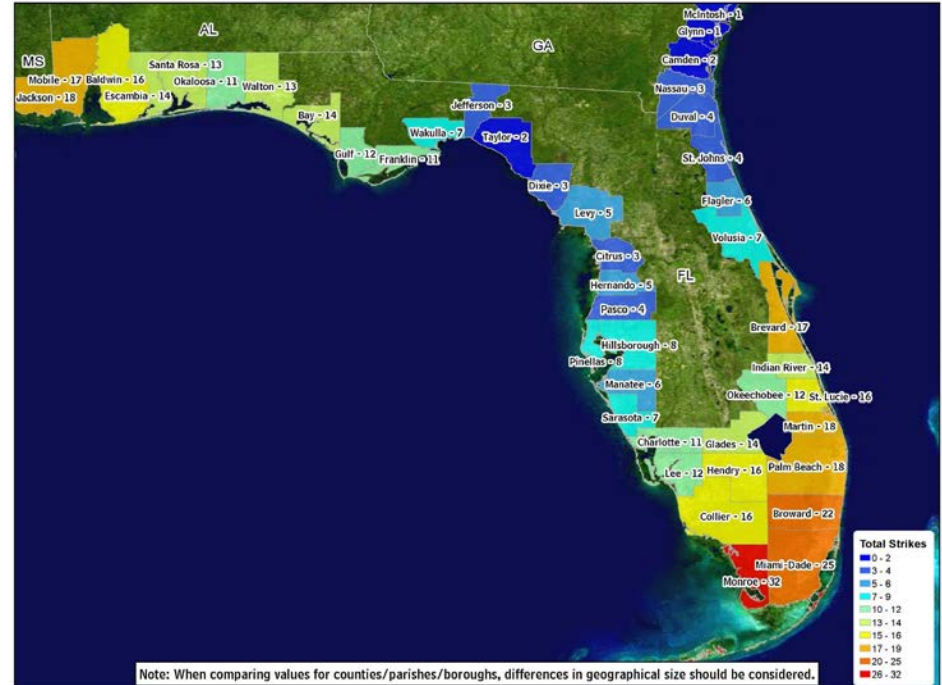
- 450,000 tubes/can lights
- LED Tubes made in Solon, Ohio by Energy Focus
- Creation of 20-25 manufacturing and installation jobs
- Saved \$3.5 Million/year in energy costs
- Very low failure rate (0.2%) reduced maintenance cost
- Health impact from less brown power
- Flicker free light for caregivers



Florida: flooding and hurricane risk



- ▼ 1 Meter SLR
1
- ▼ 2 Meter SLR
2
- ▼ 3 Meter SLR
3
- ▼ 4 Meter SLR
4
- ▼ 5 Meter SLR
5
- ▼ 6 Meter SLR
6



Total number of hurricane strikes by counties/parishes/boroughs, 1900-2010

Data from NWS NHC 46: Hurricane Experience Levels of Coastal County Populations from Texas to Maine, Jerry D. Jarrell, Paul J. Hebert, and Max Mayfield, August, 1992, with updates.

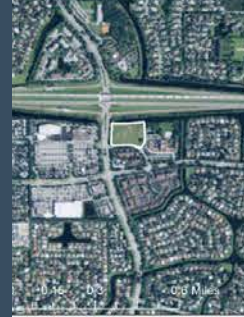
Coral Springs Property Flood Assessment



Cleveland Clinic
Coral Springs Site
Groundwater
Flood Risk

2016

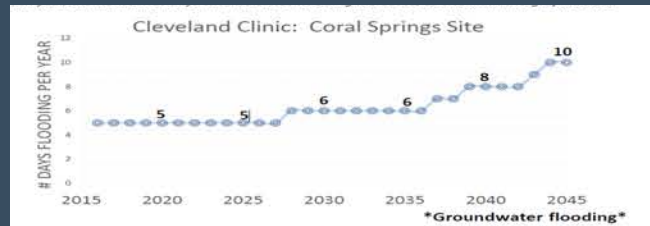
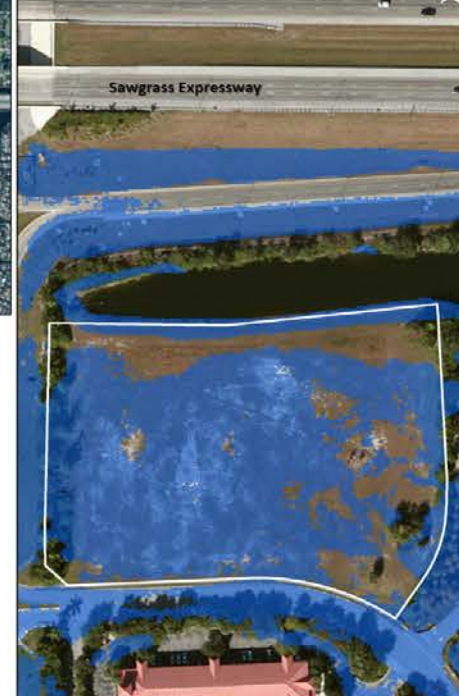
This property is projected to experience up to 5 days of groundwater flooding as deep as 8 inches in 2016.



Cleveland Clinic
Coral Springs Site
Groundwater
Flood Risk

2035

This property is projected to experience up to 6 days of groundwater flooding as deep as 1.3 feet in 2035.



Coral Springs: Built Above Code



"Our resilience to withstand extreme weather is critical, we will go beyond code in many ways to make our buildings healthier and more affordable to operate."

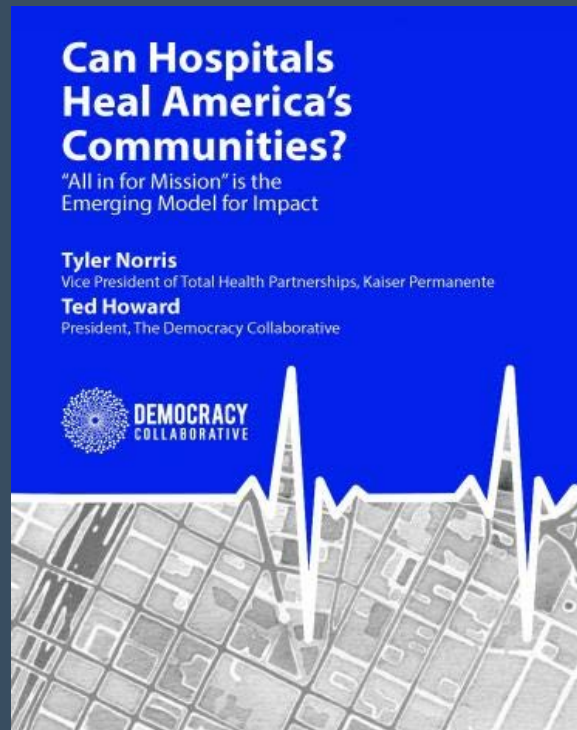
Frank Aucremanne, Executive Director, Cleveland Clinic

Trump's easing of building regulations could backfire during severe flooding

Modern Healthcare, August 27 2017

Anchor Institution Mission

- Anchor institution strategy to apply an institution's
 - Economic power
 - Human Capital
- For the mutual benefit of both the community and the enterprise





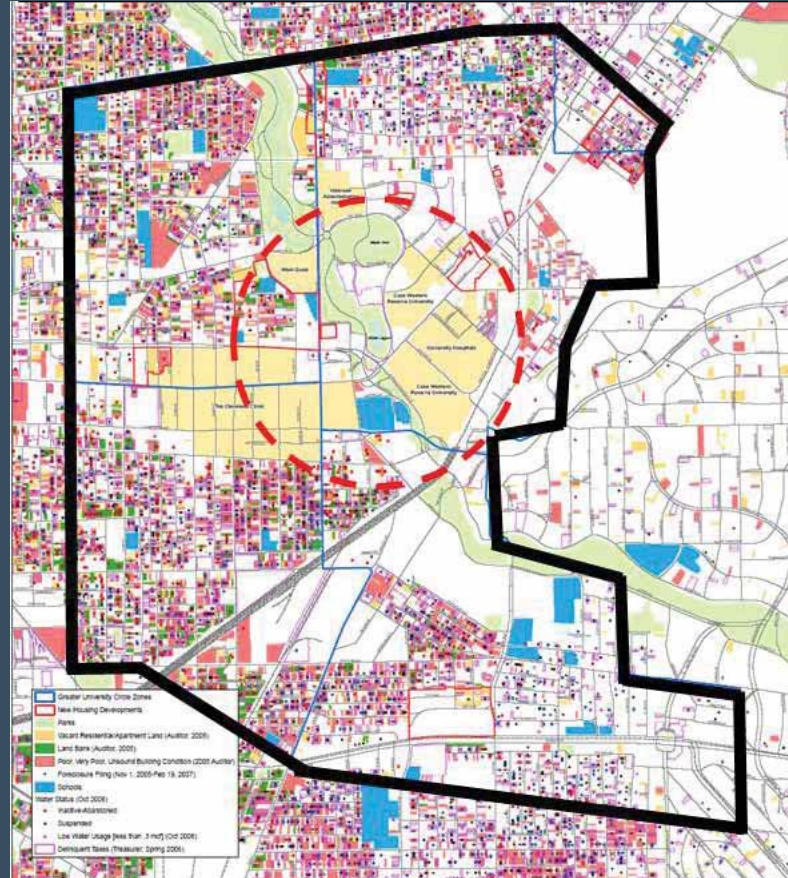
CLEVELAND'S GREATER UNIVERSITY CIRCLE INITIATIVE

Building a 21st Century City
through the Power of
Anchor Institution Collaboration

Greater University Circle Neighborhoods

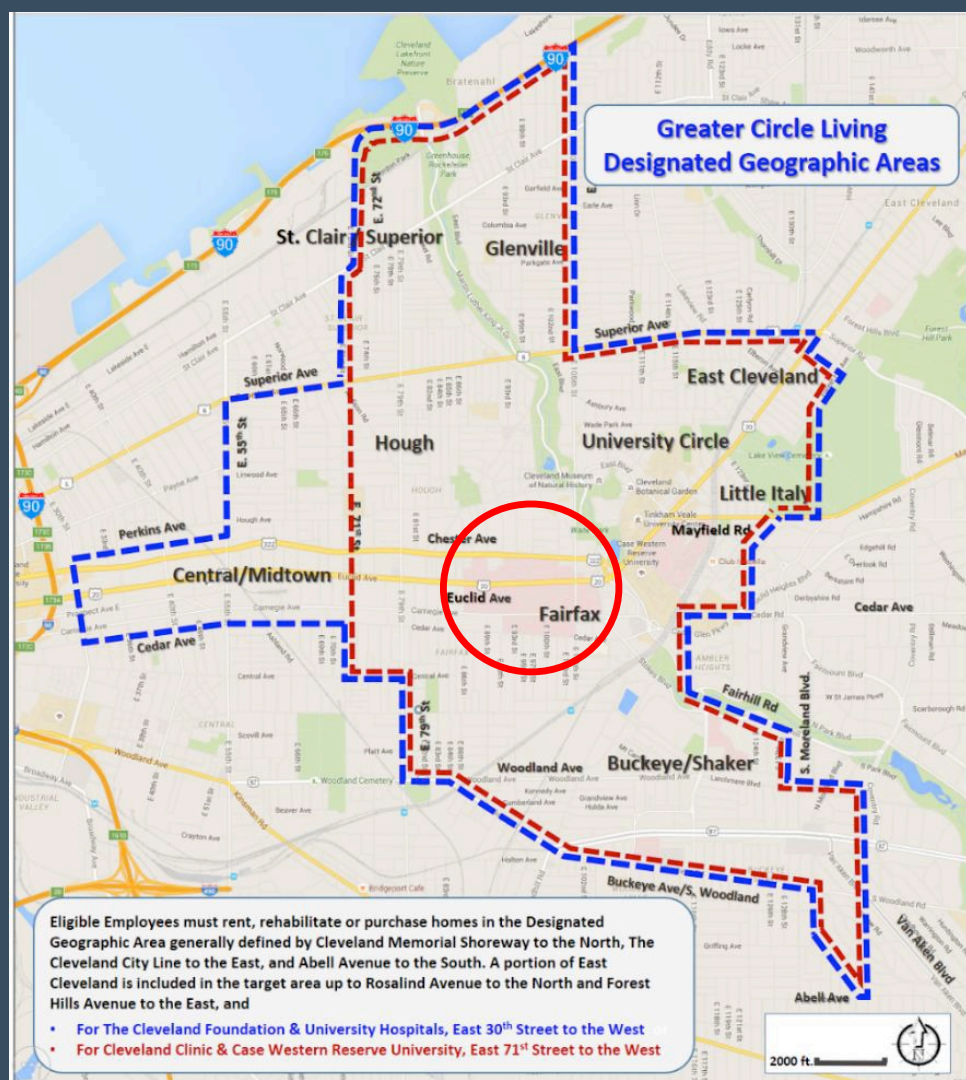
“We understand our workforce comes from the community and we want to see the community around us succeed. We really believe the investments here pay off over the long term for building this community and for our organization.”

— *Delos (Toby) M. Cosgrove, MD,*
CEO
Cleveland Clinic

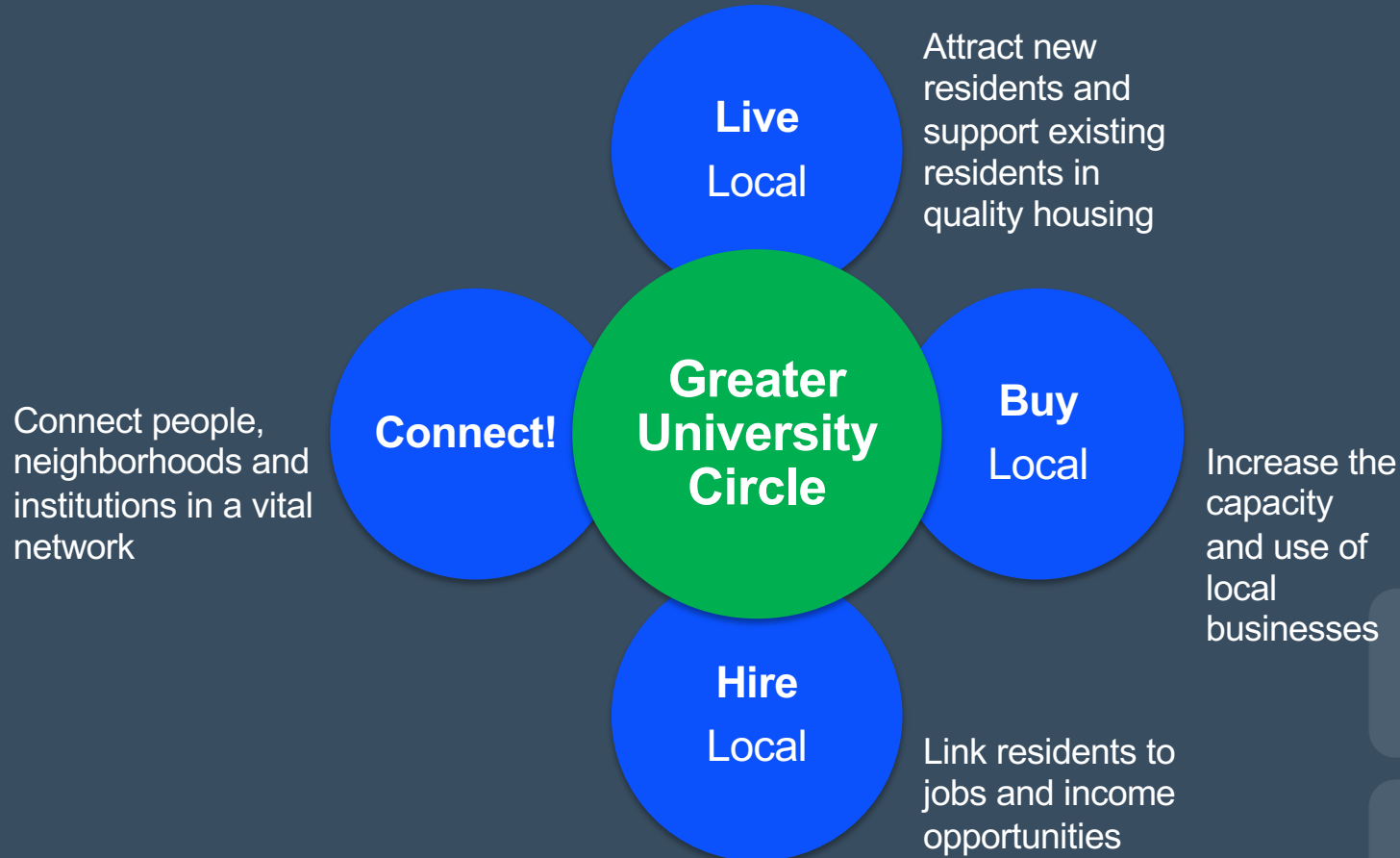


Greater University Circle Living

Targeted Neighborhoods



Priorities for Economic Inclusion



Community Climate Engagement

2017 Cleveland Healthcare Resilience Summit



Evergreen: Green City Growers



Evergreen+Cleveland Clinic Laundry





LEGEND
 made with Cleveland Clinic Support
 FRDC Lot Acquisitions / Demolitions



Langston Hughes Community Center



Healthy Community Initiative (HCI)

A collaboration between Cleveland Clinic and Community Partners

- Health education
 - Chronic health conditions
 - Infant mortality
 - Opiate abuse
- Nutrition
- Fitness





Every life deserves world class care.



Discussion